



PennyGranny

# Price Guide 2023



[www.pennygranny.com.au](http://www.pennygranny.com.au)

1300 665 750

At PennyGranny, we understand that finding the perfect portable building solution is a significant investment. That's why we've created this guide to help you navigate the options available and provide you with a clear understanding of our pricing structure.

### **Australian Craftsmanship**

We take immense pride in our commitment to quality and sustainability. Our buildings are proudly built by Australians, for Australians, using only top-quality Australian materials. This ensures that our products are not only built to last but also contribute to supporting our local industry.

### **Tailored Solutions**

Our Price Guide offers a wide range of layouts and configurations, but we also understand that your needs may be unique. If you can't find a layout that precisely suits your requirements, we encourage you to take the initiative. Simply sketch a rough plan of your ideal portable building and email it to us at [info@pennygranny.com.au](mailto:info@pennygranny.com.au). Our dedicated team will promptly provide you with a personalised price quote.

### **Flexible Dimensions**

We pride ourselves on flexibility. While our maximum single-building dimensions for construction and transport are 15 meters in length and 4.2 meters in width, our range allows us to create structures that cater to your exact specifications.

### **Versatile Configurations**

Our buildings are designed to be interconnected, allowing you to create larger and wider spaces for various applications. Whether you need extra office space, additional storage, or a customised layout for your unique project, we can deliver it.

**We value your trust and are committed to providing exceptional service at every step of the way.**

W  
E  
L  
C  
O  
M  
E

At PennyGranny, we are committed to providing you with exceptional quality and value for money. Our Portable Building package is designed to exceed your expectations, offering a range of premium inclusions that set us apart from the competition.



Our foundation is the cornerstone of durability and longevity. All our buildings have a **Super Strong 150UB/250UB Steel Base**. This robust base not only ensures stability and your building remains solid and reliable.



Our premium wall cladding features genuine Australian-made **ColorBond Cladding, Roofing and Flashings**, delivering durability and resilience to withstand even the most challenging Australian weather conditions.



We prioritise the interior of your Portable Building, starting with our **19mm Yellow Tongue Flooring**, complemented by **R1.3 Foil Backed Under Floor Insulation**. This strong and sturdy flooring provides a solid foundation for your space, keeping you comfortable year-round.



Our walls are insulated with 50mm EPS Wall Panels in Surfmist, providing exceptional warmth in winter and cooling in summer. The **BAL40 fire-rated and R2 Insulation-rated 50mm EPS Structural Coolroom Panels** guarantee your comfort like no other portable building on the market. The roof features 50mm EPS Roof Panels in Surfmist, ensuring a complete and energy-efficient enclosure.



Our commitment to quality extends to every detail, including our windows and doors. Our standard offering features face-fit **aluminium windows and doors**, equipped with fly screens and security screen. If you require additional windows or doors or wish to modify their placement, our flexible options allow you to tailor your portable building to your exact specifications.



We offer **customisable wiring options** to ensure your space functions exactly as you envision. Our team of experts is ready to collaborate with you, ensuring that every electrical detail aligns seamlessly with your requirements and preferences.

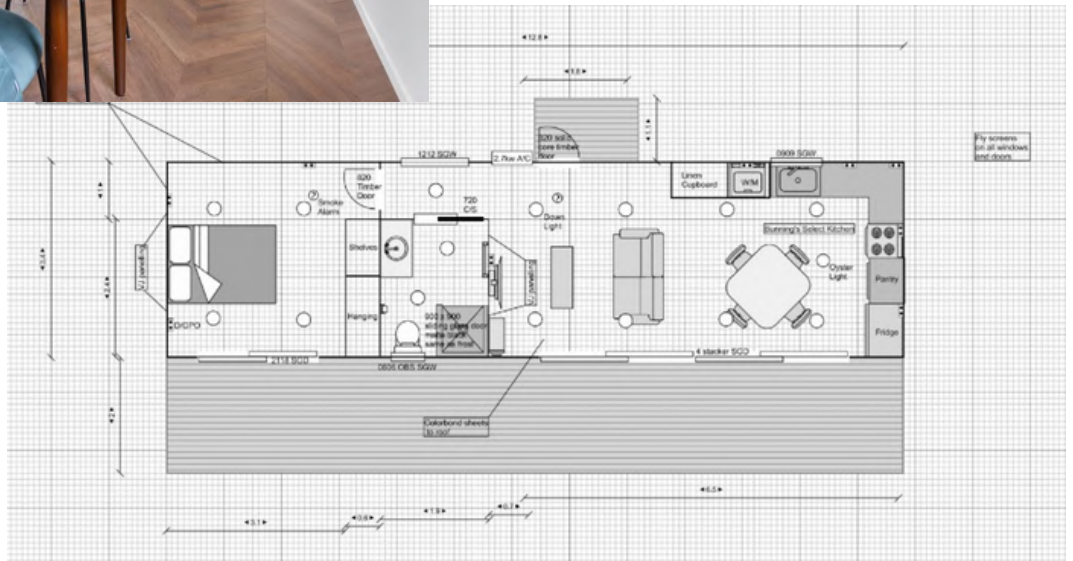


For added insulation and energy efficiency, our buildings come equipped with Air Cell Wrap. With **Air Cell Wrap**, you'll enjoy a cozier, more eco-friendly space, ensuring that your portable building is both comfortable and environmentally responsible.

**Experience the difference of Australian-made excellence in every detail of your portable building.**

# Featured Design - Glenroy

13m x 3.4m \$95,565.00\* plus GST



## Inclusions:

One-bedroom portable building with:

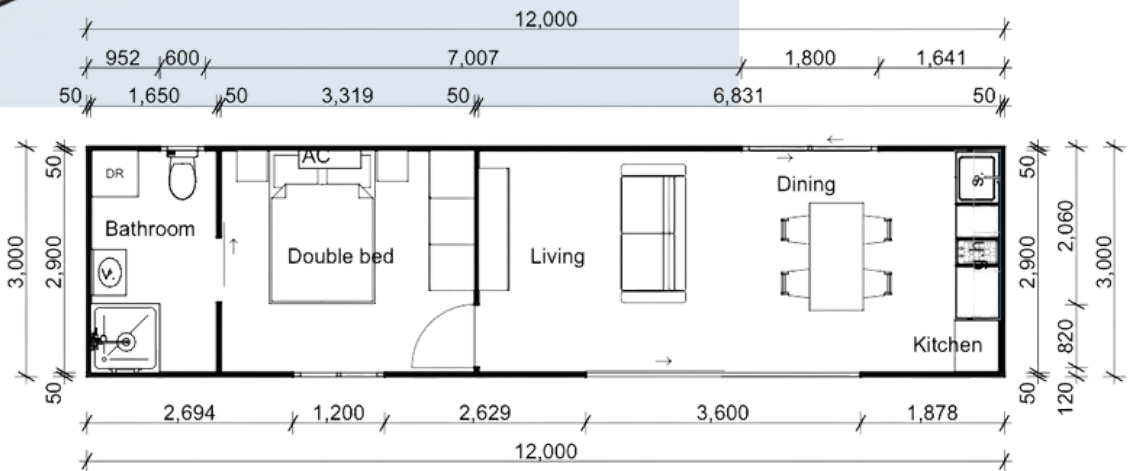
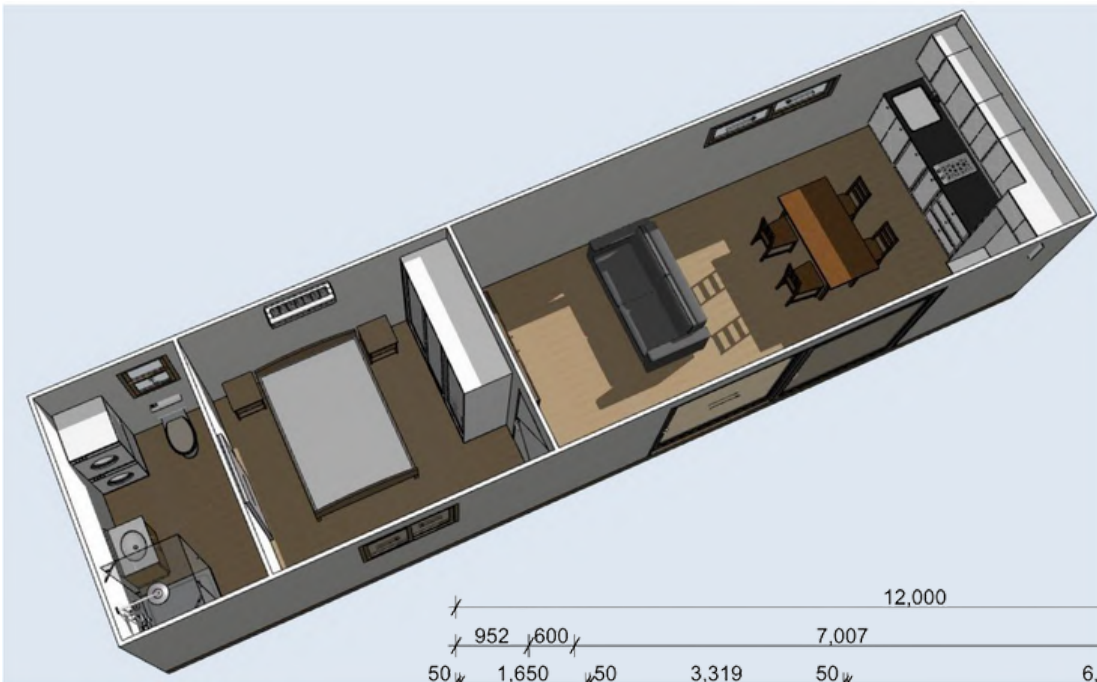
- \*Straight kitchen with sink, drainage, built in electric oven and 4 burner LPG cooktop with range hood and overhead cabinets
- \*Bathroom with washing machine / dryer provisions
- \*2.6KW reverse cycle air conditioner installed x 2
- \*Instantaneous LPG gas hot water unit Installed (gas regulators fitted for gas bottle hook up)
- \*1800 Wardrobe (shelves and hanging)
- \*Double power point x10
- \*LED down light x10
- \*Roller blinds for windows and vertical blind for sliding door

**Add a premium finish to your space by upgrading to gyprock walls at \$25,360.00 plus GST**

\*Verandah and High-End finishes are not included in the price

# Design 1

12m x 3m \$71,570.00 plus GST



## Inclusions:

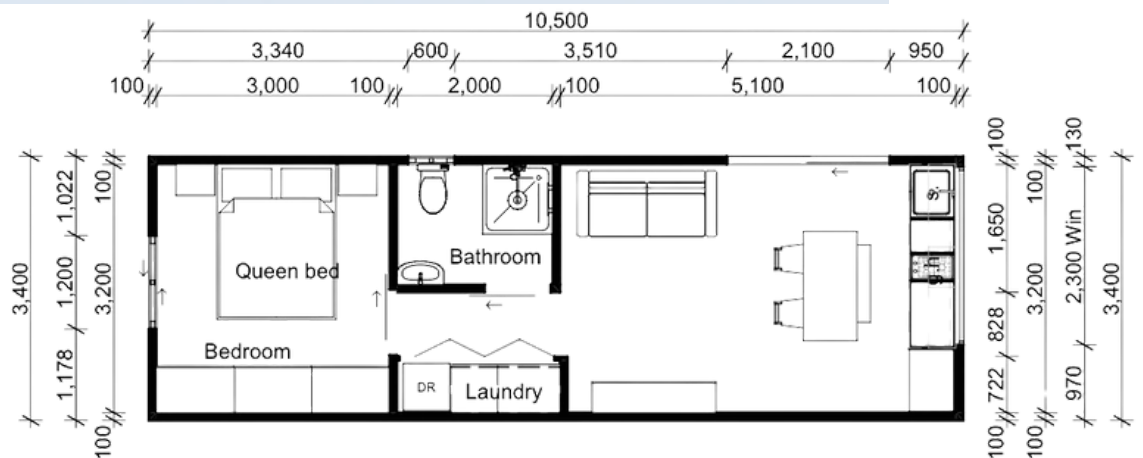
One-bedroom portable building with:

- \*Straight kitchen with sink, drainage, two burner LPG gas cooktop and overhead cabinets
- \*Ensuite with washing machine / dryer provisions
- \*2.6KW reverse cycle air conditioner installed
- \*Instantaneous LPG gas hot water unit Installed (gas regulators fitted for gas bottle hook up)
- \*1800 Wardrobe (shelves and hanging)
- \*Double power point x 7
- \*LED down light x 5
- \*Roller blinds for windows and vertical blind for sliding door

**Add a premium finish to your space by upgrading to gyprock walls at \$21,735.00 plus GST**

# Design 2

10.5m x 3.4m \$76,130.00 plus GST



## Inclusions:

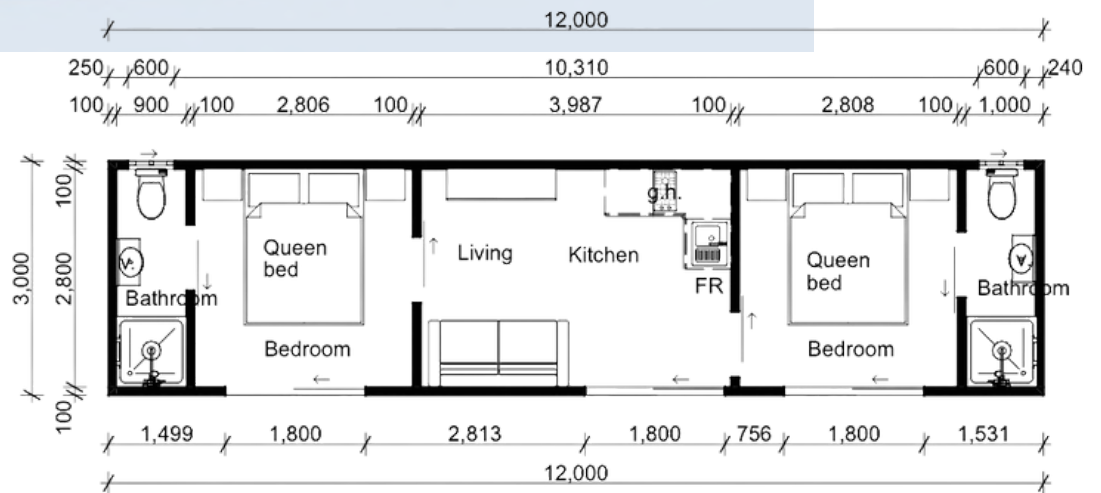
One-bedroom portable building with:

- \*Straight kitchen with sink, drainage, two burner LPG gas cooktop and overhead cabinets
- \*Bathroom
- \*Enclosed laundry
- \*2.6KW reverse cycle air conditioner installed x 2
- \*Instantaneous LPG gas hot water unit Installed (gas regulators fitted for gas bottle hook up)
- \*3000 Wardrobe (shelves and hanging)
- \*Double power point x 7
- \*LED down light x 5
- \*Roller blinds for windows and vertical blind for sliding door

**Add a premium finish to your space by upgrading to gyprock walls at \$19020.00 plus GST**

# Design 3

12m x 3m \$78,101.00 plus GST



## Inclusions:

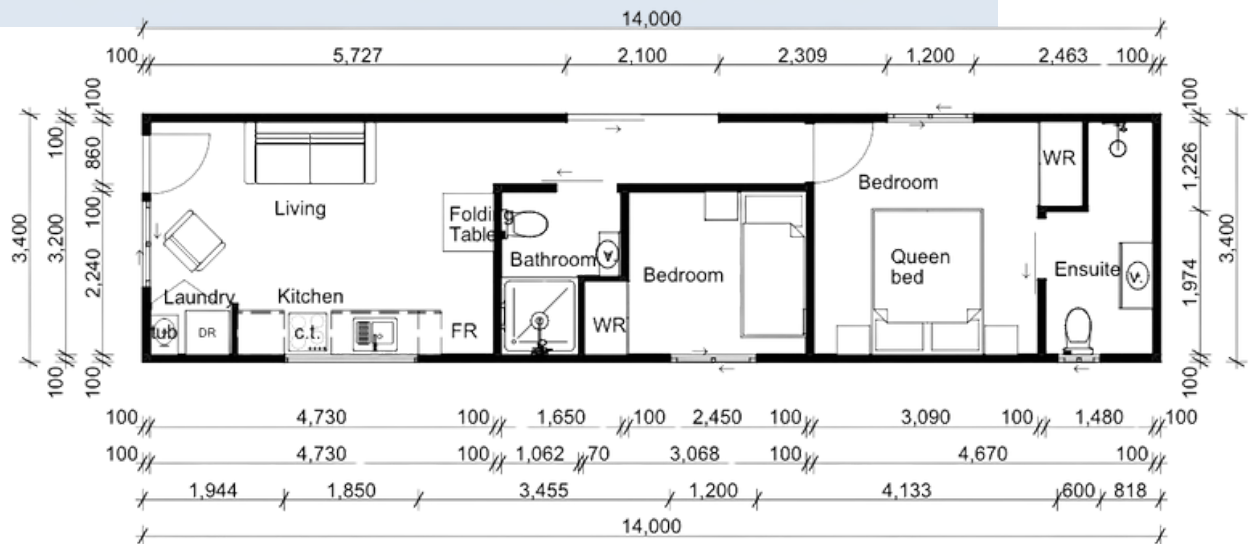
Two-bedroom portable building with:

- \*Corner kitchen with sink, drainage and two burner LPG gas cooktop
- \*Two ensuites
- \*2.6KW reverse cycle air conditioner installed x 2
- \*Instantaneous LPG gas hot water unit Installed (gas regulators fitted for gas bottle hook up)
- \*1200 Wardrobes (shelves and hanging)
- \*Double power point x9
- \*LED down light x7
- \*Vertical blind for sliding doors

**Add a premium finish to your space by upgrading to gyprock walls at \$21,735.00 plus GST**

# Design 4

14m x 3.4m \$98,090.00 plus GST



## Inclusions:

Two-bedroom portable building with:

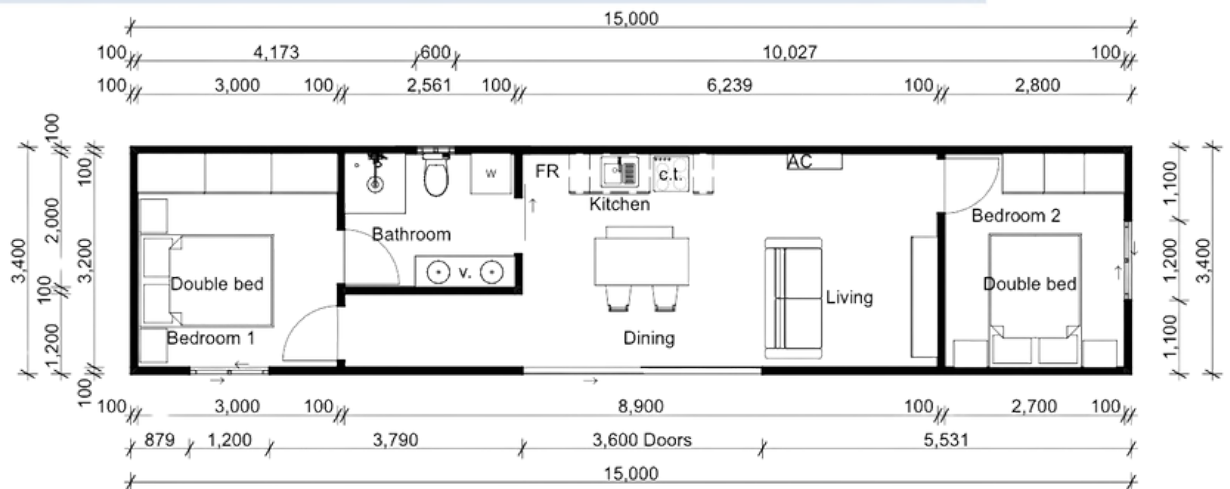
- \*Straight kitchen with sink, drainage and two burner LPG gas cooktop
- \*Main bathroom with shower
- \*Enclosed laundry with tub
- \*2.6KW reverse cycle air conditioner installed x 2
- \*Instantaneous LPG gas hot water unit Installed (gas regulators fitted for gas bottle hook up)
- \*1200 Wardrobes (shelves and hanging)
- \*Double power point x9
- \*LED down light x8
- \*Roller blinds for windows and vertical blind for sliding door

**Add a premium finish to your space by upgrading to gyprock walls at \$25,360.00 plus GST**



# Design 5

15m x 3.4m \$102,815.00 plus GST



## Inclusions:

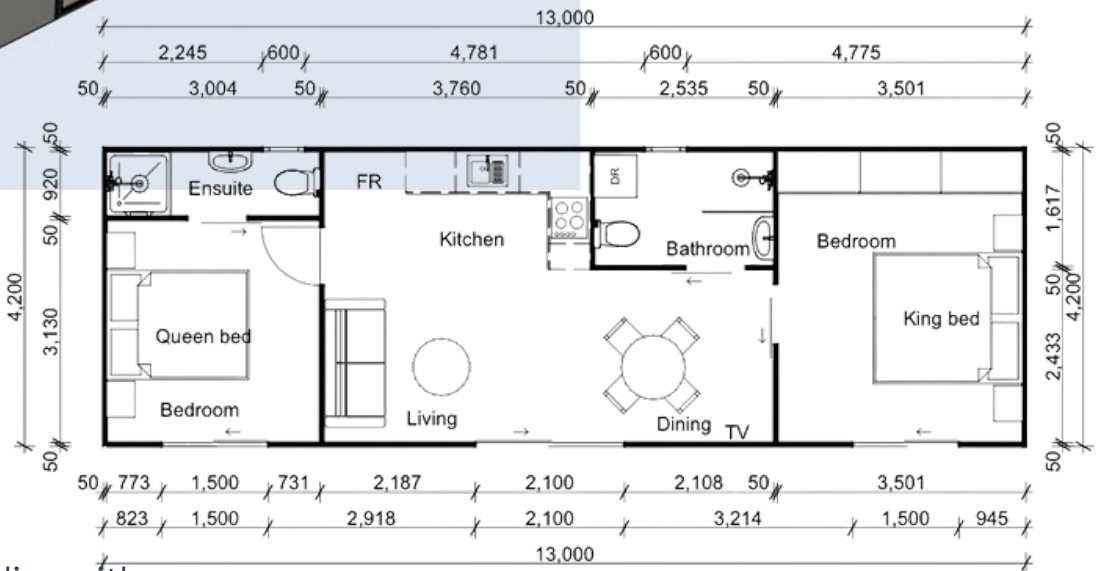
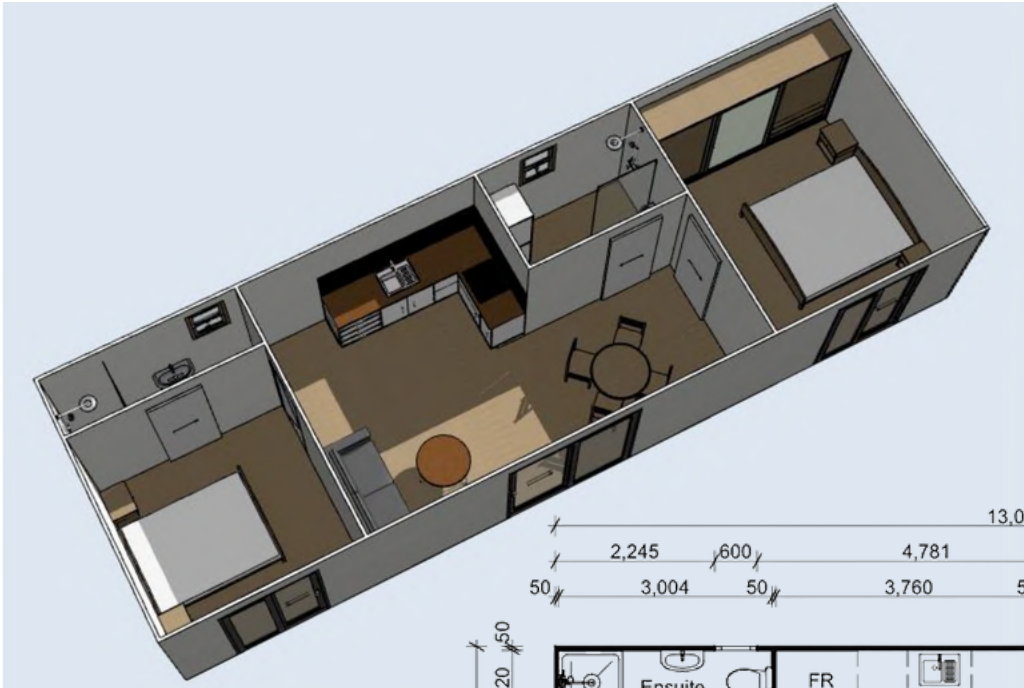
Two-bedroom portable building with:

- \*Straight kitchen with sink, drainage and two burner LPG gas cooktop
- \*Main bathroom with washing machine / dryer provisions
- \*2.6KW reverse cycle air conditioner installed x 2 (each bedroom) and 5kw Air Conditioner Reverse Cycle Installed in the lounge room
- \*Instantaneous LPG gas hot water unit Installed (gas regulators fitted for gas bottle hook up)
- \*1800 and 3000 Wardrobes (shelves and hanging)
- \*Double power point x8
- \*LED down light x6
- \*Roller blinds for windows and vertical blind for sliding door

**Add a premium finish to your space by upgrading to gyprock walls at \$27,170.00 plus GST**

# Design 6

13m x 4.2m \$110,330.00 plus GST



## Inclusions:

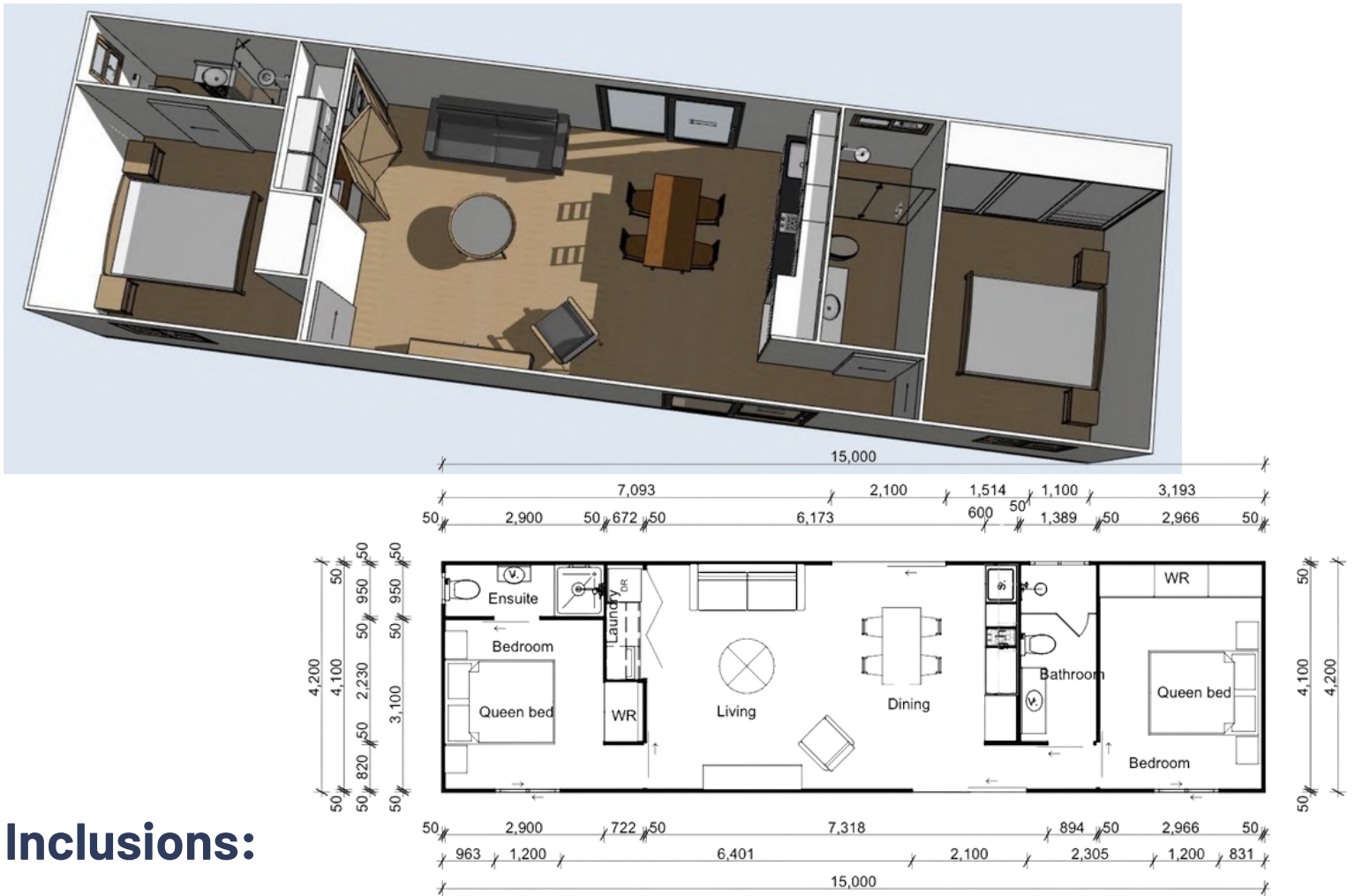
Two-bedroom portable building with:

- \*Corner kitchen with sink, drainage and electric oven and cooktop
- \*Main bathroom with washing machine / dryer provisions plus ensuite
- \*2.6KW reverse cycle air conditioner installed x 2 (each bedroom) and 5kw Air Conditioner Reverse Cycle Installed in the lounge room
- \*Instantaneous LPG gas hot water unit Installed (gas regulators fitted for gas bottle hook up)
- \*3500 Wardrobe (shelves and hanging)
- \*Double power point x12
- \*LED down light x10
- \*Vertical blinds for sliding doors

Add a premium finish to your space by upgrading to gyprock walls at \$23,550.00 plus GST

# Design 7

15m x 4.2m \$122,585.00 plus GST



## Inclusions:

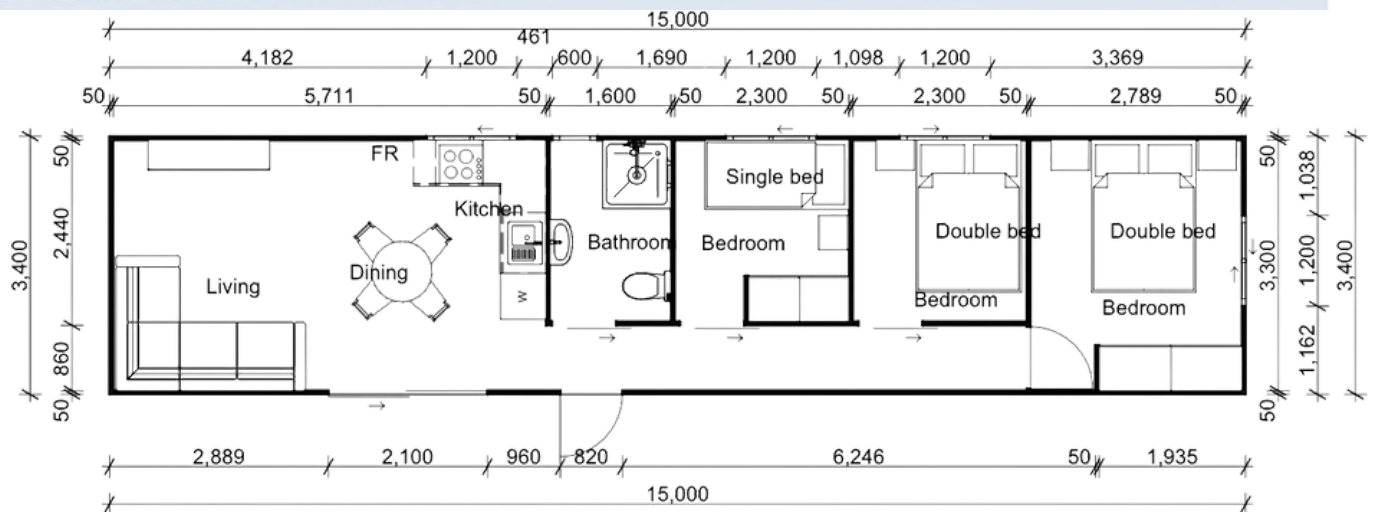
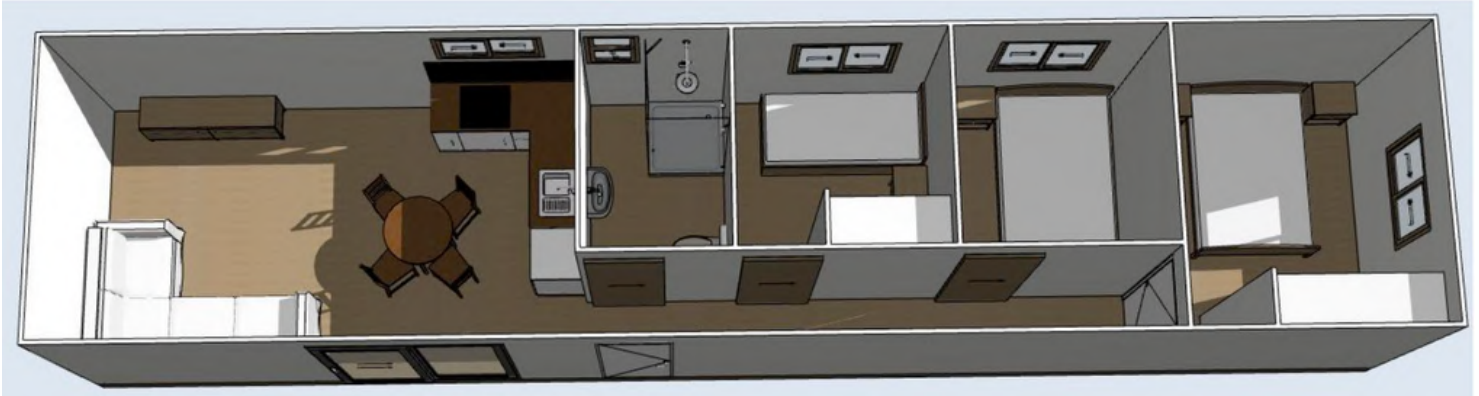
Two-bedroom portable building with:

- \*Straight kitchen with sink, drainage, two burner LPG gas cooktop and overhead cabinets
- \*Enclosed laundry with tub
- \*Main bathroom with larger shower plus ensuite
- \*2.6KW reverse cycle air conditioner installed x 2
- \*Instantaneous LPG gas hot water unit Installed (gas regulators fitted for gas bottle hook up)
- \*3000 and 1200 Wardrobes (shelves and hanging)
- \*Double power point x12
- \*LED down light x10
- \*Roller blinds for windows and vertical blind for sliding doors

**Add a premium finish to your space by upgrading to gyprock walls at \$27,170.00 plus GST**

# Design 8

15m x 3.4m \$98,860.00 plus GST



## Inclusions:

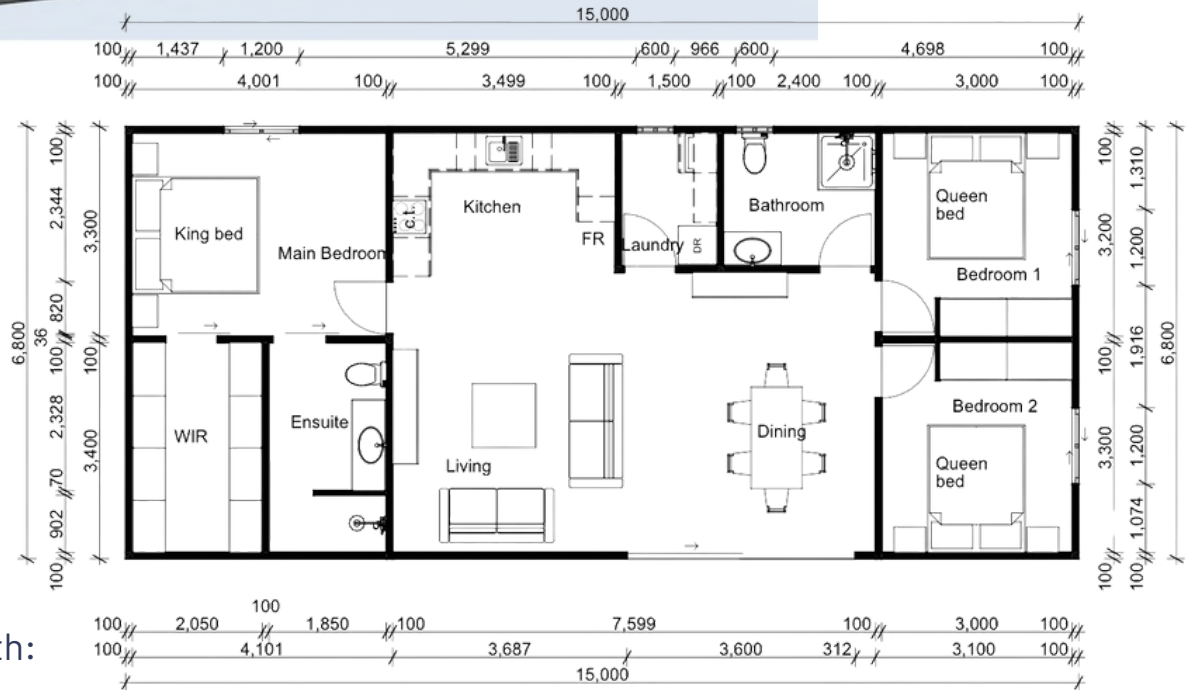
Three-bedroom portable building with:

- \*Corner kitchen with sink, drainage, two burner cooktop and space for washing machine (or dishwasher) with provisions
- \*Bathroom
- \*2.6KW reverse cycle air conditioner installed (main bedroom) and 5kw Air Conditioner Reverse Cycle Installed in the lounge room
- \*Instantaneous LPG gas hot water unit Installed (gas regulators fitted for gas bottle hook up)
- \*1800 Wardrobe and 1500 Wardrobe (shelves and hanging)
- \*Double power point x8
- \*LED down light x8
- \*Roller blinds for windows and vertical blind for sliding door

**Add a premium finish to your space by upgrading to gyprock walls at \$27,170.00 plus GST**

# Design 9

15m x 6.8m \$199,450.00 plus GST



## Inclusions:

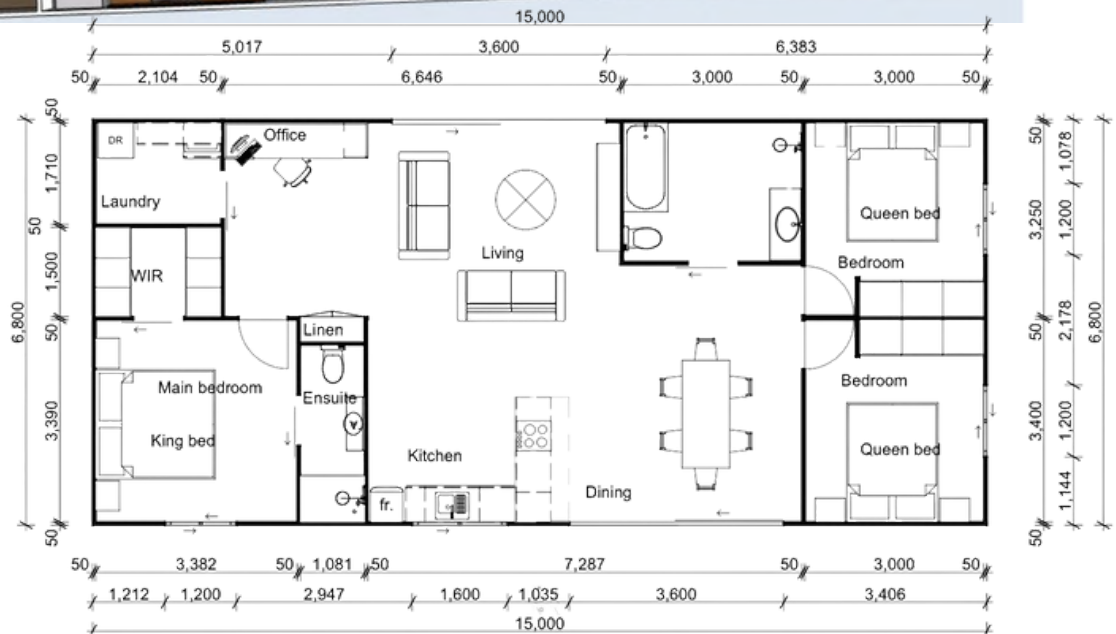
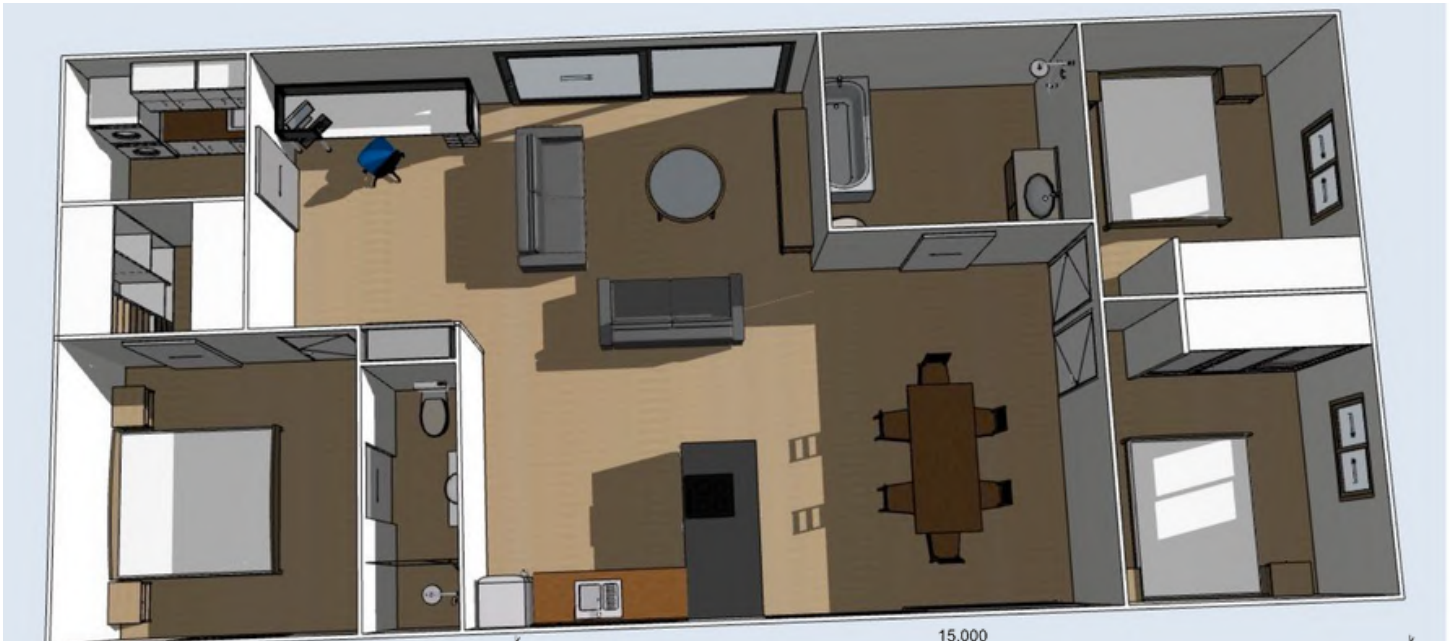
Three-bedroom portable building with:

- \*C-shaped kitchen with sink, drainage and two burner LPG gas cooktop
- \*Main bathroom with shower
- \*Main bedroom with ensuite and large walk-in robe
- \*Separate laundry room with cabinets and tub
- \*2.6KW reverse cycle air conditioner installed in each bedroom and 7kw Air Conditioner Reverse Cycle Installed in the lounge room
- \*Instantaneous LPG gas hot water unit Installed (gas regulators fitted for gas bottle hook up)
- \*1800 Wardrobe (shelves and hanging) in two bedrooms
- \*Double power point x14, LED down light x 14
- \*Roller blinds for windows and vertical blinds for sliding door

**Add a premium finish to your space by upgrading to gyprock walls at \$54,340.00 plus GST**

# Design 10

15m x 6.8m \$210,350.00 plus GST



## Inclusions:

Three-bedroom portable building with:

- \*Corner kitchen with sink, drainage, electric oven and cooktop
- \*Main bathroom with shower and bath tub
- \*Main bedroom with ensuite and walk-in robe
- \*Separate laundry room with cabinets and tub
- \*2.6KW reverse cycle air conditioner installed in each bedroom and 7kw Air Conditioner Reverse Cycle Installed in the lounge room
- \*Instantaneous LPG gas hot water unit Installed (gas regulators fitted for gas bottle hook up)
- \*1800 Wardrobe (shelves and hanging) in two bedrooms
- \*Double power point x16, LED down light x 13
- \*Roller blinds for windows and vertical blinds for sliding doors

**Add a premium finish to your space by upgrading to gyprock walls at \$54,340.00 plus GST**

# PROJECT TIMELINE

01

## Choose Your Floor Plan

Begin your journey by selecting a floor plan that suits your needs from our diverse range or collaborate with us to create a custom design tailored to your unique requirements.

02

## Select Your Inclusions and Finishes

Tailor your space to your exact preferences by selecting from various options, including flooring materials, kitchen colours, bathroom fixture, and more. Let your portable building reflect your unique style.

03

## Quote Review and Sign-off

Once your selections are finalised, we provide you with a detailed quote. Review the quote to ensure it meets your expectations, and upon agreement, sign a purchase agreement to initiate the project.

04

## Pay Deposit

Secure your custom portable building project by making a 10% deposit based on the agreed-upon quote. This deposit confirms your commitment and initiates the production process.

05

## Production Stage

Our skilled team begins the construction of your custom portable building. This stage involves the assembly of components, quality checks, and the incorporation of your chosen inclusions and finishes.

Approximately 2-3 months from the deposit (may vary based on complexity and demand).

06

## Delivery to Your Property

Once your custom portable building is completed and passes our quality assurance checks, we schedule a delivery date that suits your convenience. Our team ensures a safe and efficient delivery to your specified location.

**Elevate the usability and aesthetics of your portable building with our supplementary inclusions. Whether you need extra power points for increased convenience or larger windows to bring in more natural light, these additions are designed to elevate your space.**

Window 600 Wide x 600 High	\$669
Window 1200 Wide x 900 High	\$1035
Window 1200 Wide x 1200 High	\$1250
Window 1800 Wide x 1200 High	\$1427
Window 1800 Wide x 1800 High	\$1750
Door 1800 Wide x 2100 High	\$2025
Door 2100 Wide x 2100 High	\$2204
Door 3600 Wide x 2100 High	\$4955
Internal Wall with Painted Door	\$2170
LED Down Light	\$168
Double Power Point	\$225
Outdoor Light	\$325
Outdoor Power Point	\$265
2.6KW Reverse Cycle Air Conditioner Installed	\$1975
5KW Reverse Cycle Air Conditioner Installed	\$2945
7KW Reverse Cycle Air Conditioner Installed	\$3707
1800 Wardrobe (shelves and hanging)	\$2125

**Didn't find a specific item you'd like to include in your building? Feel free to ask our team, and we'll source it for you.**

\*Please note that all prices listed in this guide are exclusive of Goods and Services Tax (GST)





# ADDITIONAL SERVICES OFFERED

---

Our dedicated team is here to assist with the following essential arrangements:

- ✓ **Project Management**  
Our experienced project management team can oversee the entire process, ensuring your portable building project stays on track and on budget. From initial planning to final delivery, we'll handle all the logistics, scheduling, and coordination, so you can relax knowing your project is in capable hands. Contact us for a customised project management solution tailored to your needs.  
**The cost for this service is \$130 per hour**
- ✓ **Council Approval**  
Navigating council regulations can be complex. Our dedicated Town Planner service bridges the gap between you and your local council, making the process smoother. **The cost for this service is \$2500**
- ✓ **Site Preparation & Access Guidance**  
Depending on your property, site preparation may be necessary, including tasks like tree removal and ground leveling. Our expert guidance ensures your site is ready for your new home, with estimated preparation **costs ranging from \$2000 to \$4000.**
- ✓ **Delivery to Your Property**  
We've partnered with reputable freight-service providers across Australia to ensure your prefabricated home arrives safely. Transportation costs for buildings up to 15 meters in length and 3.4 meters in width typically **range from \$1500 to \$6000.** Additional charges may apply for larger modules or remote deliveries.

### ✓ **Crane Hire Assessment & Crane Booking**

Our team will assess your property's access and layout to determine if crane hire is needed. Crane hire costs vary based on crane size and typically **range from \$500 to \$7000.**

### ✓ **Services Connection**

While your home comes with essential amenities, including plumbing, electrical junction boxes, and water heaters, connecting these services is your responsibility. Our team can help you to engage a local electrician and plumber for this task, with estimated connection fees falling between \$2000 and \$3000 if services are readily available nearby.

**We're here to make your portable building journey as seamless as possible, offering a range of services to support you every step of the way.**



### 1 - 2 - 3 Bed Cabins

Perfect for individuals, couples or families



### Fully Equipped

Cooktop, storage, hot water system, air-con, shower and toilet



### Australian Made

High quality, fully insulated and water tight



### Live In

Temporary home, office, extra room



### Rent Out

Earn extra income  
Airbnb



### Fast

Short lead time, move in quickly!



*We were so surprised at how affordable these portable prefab homes are to hire and it seems the perfect solution for those who need a temporary accomodation!*

**Courtney and Iain Miles, QLD**



*Mum's granny flat arrived and it is just perfect for her. It's a great size for her and so modern and lovely. She's absolutely thrilled!*

**Wendy Phillips, QLD**



*Absolutely the best company for affordable housing. Nothing is too much effort. Couldn't be happier to be part of the pennygranny family.*

**Tracy Hawkins, QLD**

## Contact Us



1300 665 750



15 Rosella Street, Dural NSW  
2158



info@pennygranny.com.au



https://pennygranny.com.au